

Casting to the living room TV

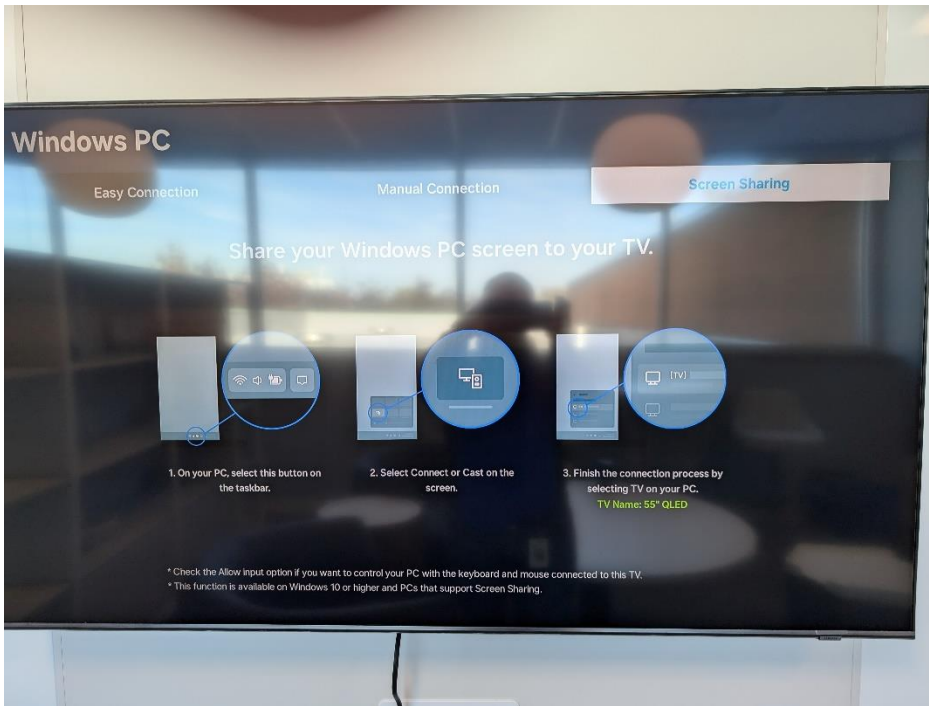
1. Power the TV on
2. Navigate the remote-control directional button to the left and select, by pressing the center of the remote-control directional button, Daily+.



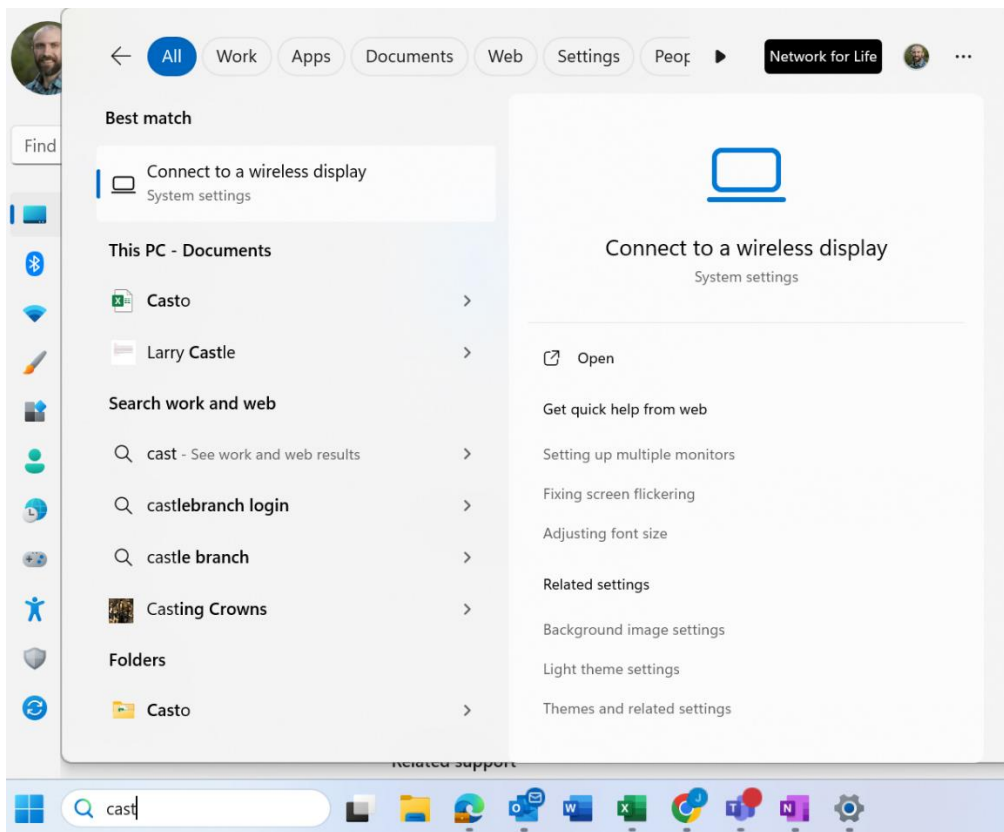
3. Navigate to and select Remote PC.



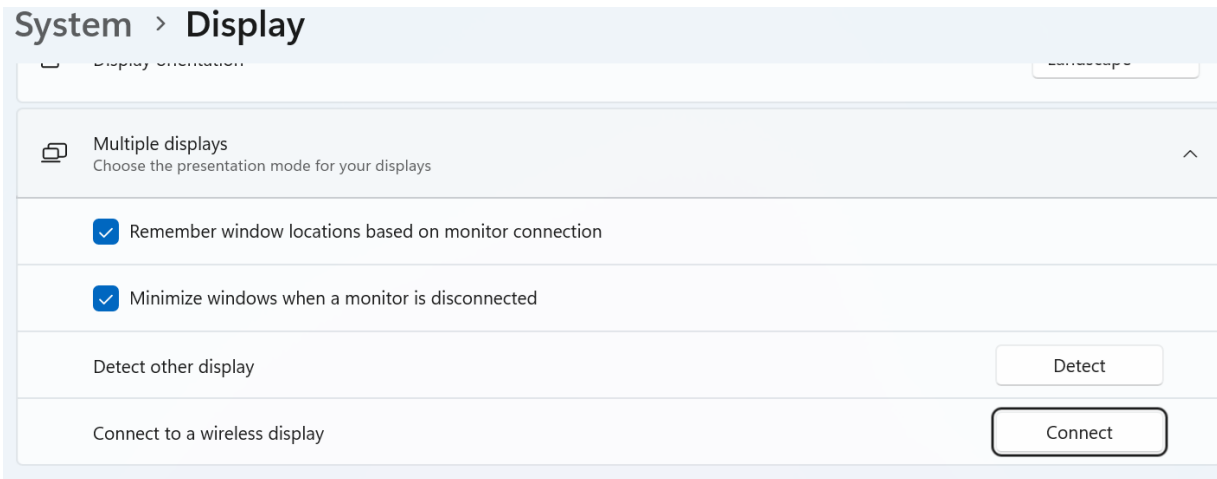
4. Move the directional button to the right to Screen Sharing. The TV is now ready to cast. The next steps need to take place on your laptop.



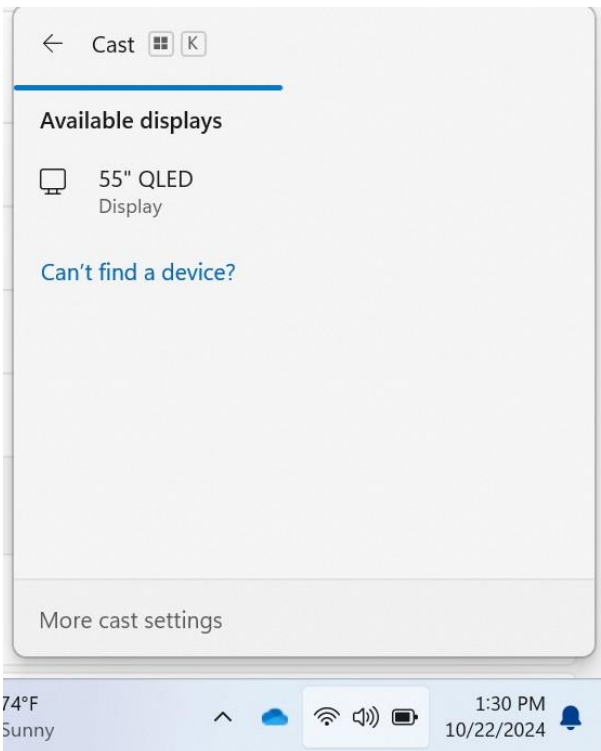
5. On your laptop search either “cast” or “connect to a wireless display”



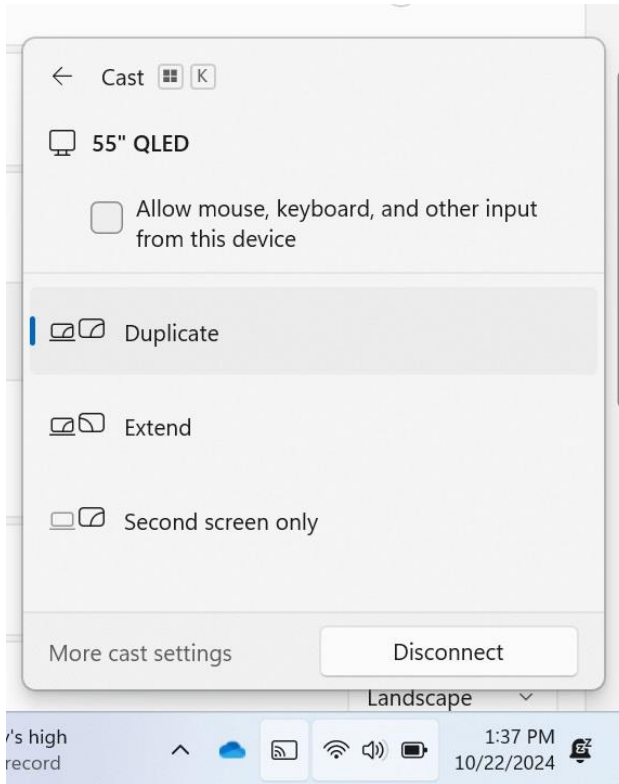
6. On the next screen, next to Connect to a wireless display, click connect.



7. A box will pop up in the bottom right hand of your laptop with all of the available displays. Choose 55” QLED. It can take a minute or so to connect.



8. Once your laptop has connected to the TV, another box will pop up with screen options. The default is to mirror the display of your laptop, but you can also extend, for a second screen, or just show everything on the TV only and not your laptop.



9. Once you are done casting to the TV you can disconnect one of two ways. Either turn the TV off which will end the casting session or select the cast icon in the bottom right-hand corner of your laptop and select disconnect.

