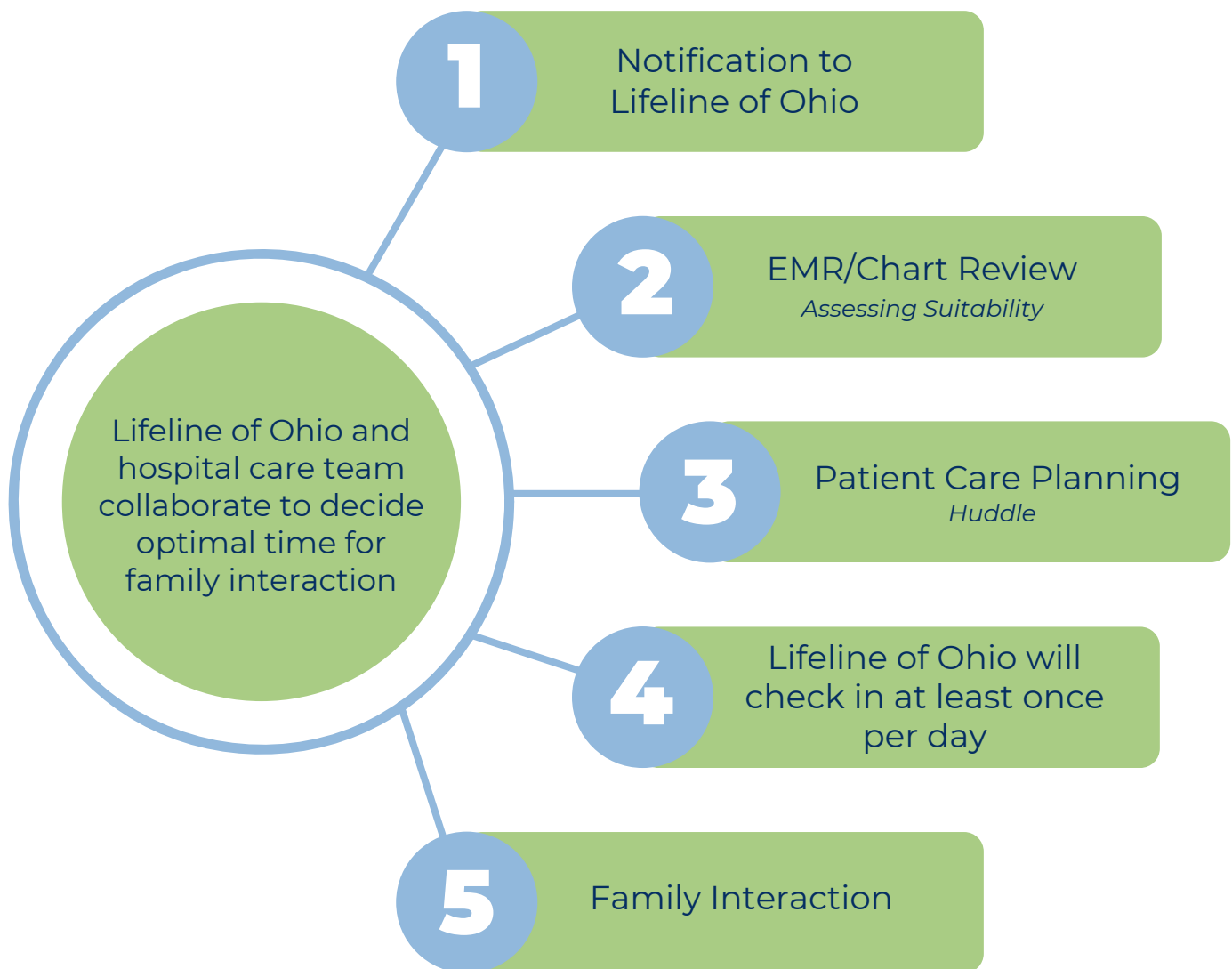


Pediatric Catastrophic Brain Injury Guidelines (CBIGs)*

Maintaining the Option of Donation

DONOR MANAGEMENT



*Pediatric patient classified as anyone weighing under 50kg

Pediatric Catastrophic Brain Injury Guidelines (CBIGs)*

Maintaining the Option of Donation

MAINTAIN BLOOD PRESSURE

- Maintain normal blood pressure and MAP per age
- Fluid resuscitation
- Consider inotropic agents/vasopressor support
- Consider invasive hemodynamic monitoring

OXYGENATION & VENTILATION

Maintain:

- PaO₂ > 100 mmHg
- PaCO₂ 35-45 mmHg
- Arterial pH 7.35-7.45
- PEEP 5.0-8.0
- Aggressive pulmonary hygiene
- Respiratory treatments as needed

MAINTAIN HOMEOSTASIS

- Monitor labs, including: basic metabolic panel, magnesium, phosphate, heme8, ABGs
- Monitor and treat electrolytes
- Monitor glucose and treat with insulin drip (keep 60-115)
- Maintain NA < 155 mmol/L
- If PT > 16, give 2 units FFP
- Blood bank sample ABO typing
- Maintain Hgb > 8g/dL and Hct > 24%

MAINTAIN URINE OUTPUT

- Treat diabetes insipidus with Vasopressin 0.5-10 milliunits/kg/hr

NORMALIZE TEMPERATURE

- Maintain core temperature between 37 C – 38 C

*These guidelines are recommendations only.
Please consult and follow your hospital policy.*

**Pediatric patient classified as anyone weighing under 50kg*