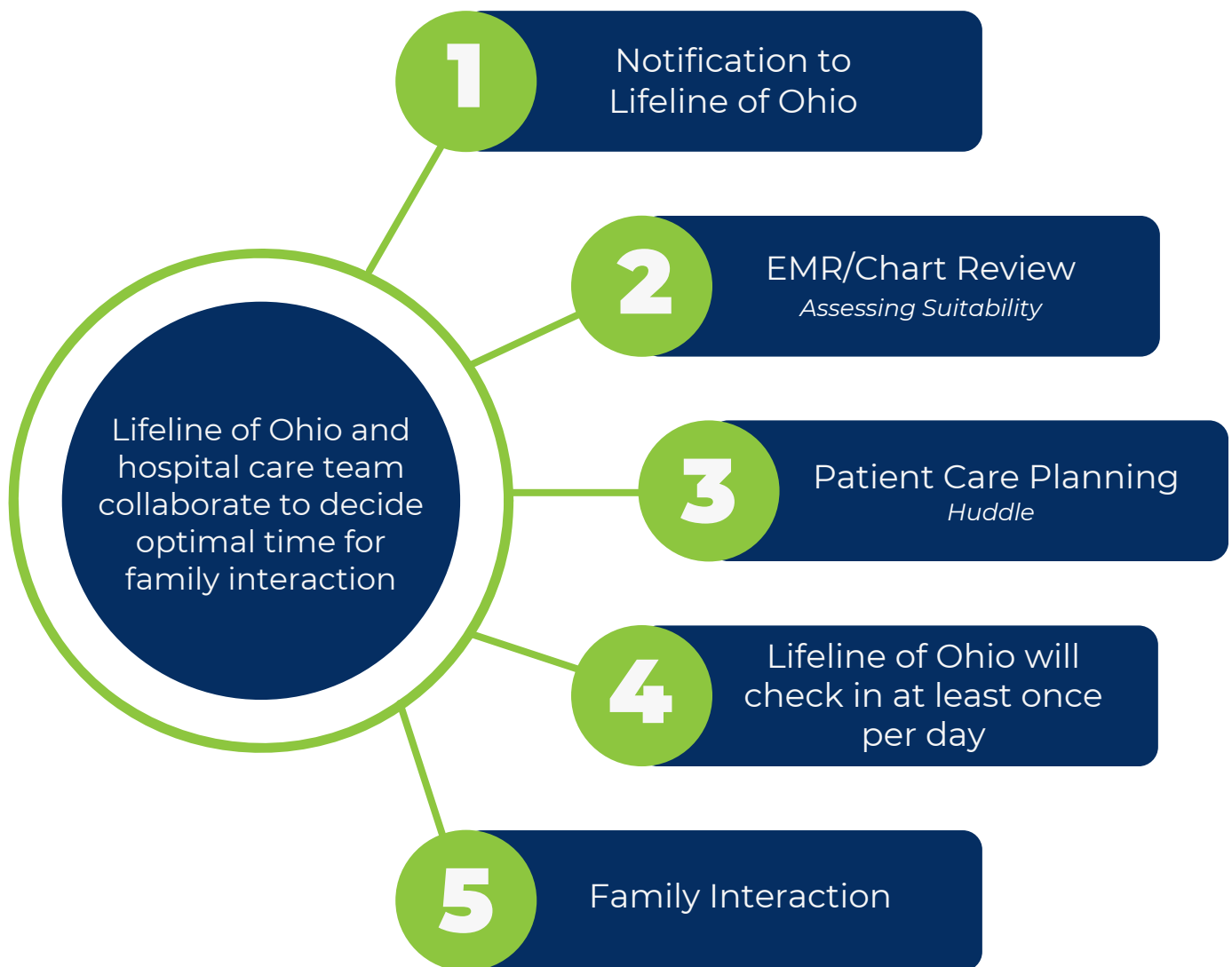


Adult Catastrophic Brain Injury Guidelines (CBIGs)

Maintaining the Option of Donation

DONOR MANAGEMENT



Adult Catastrophic Brain Injury Guidelines (CBIGs)

Maintaining the Option of Donation

MAINTAIN BLOOD PRESSURE

- Maintain systolic blood pressure > 100 (MAP > 60)
- Fluid resuscitation
- Consider inotropic agents/vasopressor support
- Consider invasive hemodynamic monitoring

OXYGENATION & VENTILATION

Maintain:

- PaO₂ > 100 mmHg
- PaCO₂ 35-45 mmHg
- Arterial pH 7.35-7.45
- PEEP 5.0-8.0
- Aggressive pulmonary hygiene
- Respiratory treatments as needed

MAINTAIN HOMEOSTASIS

- Monitor labs, including: basic metabolic panel, magnesium, phosphate, heme8, ABGs
- Maintain Hgb > 8g/dL and Hct > 24%
- Monitor and treat electrolytes
- Monitor glucose and treat with insulin drip (keep 80-200)
- Maintain NA < 155 mmol/L
- If PT > 16, give 2 units FFP
- Blood bank sample ABO typing

MAINTAIN URINE OUTPUT

- Treat diabetes insipidus with Vasopressin 1-2.5 units/hr

NORMALIZE TEMPERATURE

- Maintain core temperature between 37 C – 38 C

*These guidelines are recommendations only.
Please consult and follow your hospital policy.*